



CYPRUS, LIMASSOL

THE SQUARE

PRIME LOCATION IN PANTHEA
3RD AND 4TH FLOORS



DECEMBER OF 2025 READY FOR DELIVERY

- ✓ BRAND NEW PROJECT 2025
- ✓ PRIME LOCATION
- ✓ 100% QUALITY MATERIALS
- ✓ TOP BRANDS FIXTURES
- ✓ LAVISH DESIGN





Enjoy Unique Moments

Experience unforgettable evenings on the penthouse terrace, surrounded by breathtaking panoramic views of the city and the sea. The perfect setting for relaxing, dining, or creating memories under the moonlit sky.



PENTHOUSE 301



PENTHOUSE 302



PENTHOUSE 303

3 BEDROOMS
3 BATHROOMS/WC
2 PARKING
1 STORAGE

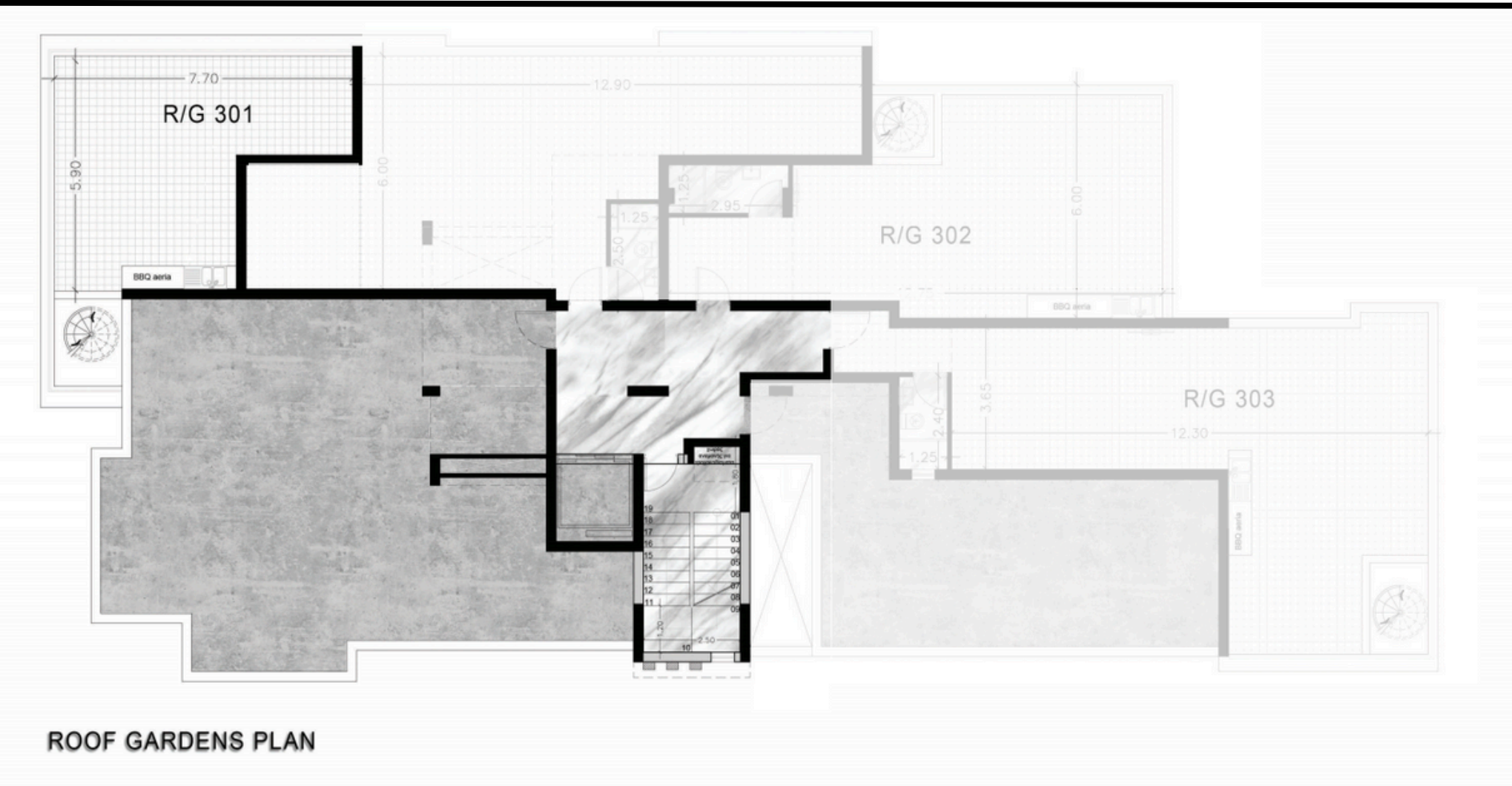
- Internal area = 112m²
- Covered veranda = 34m²
- Uncovered veranda = 12m²
- Roof garden = 38m²

3 BEDROOMS
4 BATHROOMS/WC
2 PARKING
1 STORAGE

- Internal area = 114m²
- Covered veranda = 41m²
- Roof garden = 68m²
- Extra studio = 30m²

3 BEDROOMS
4 BATHROOMS/WC
2 PARKING
1 STORAGE

- Internal area = 116m²
- Covered veranda = 31m²
- Uncovered veranda = 26m²
- Roof garden = 90m²
- Extra studio = 35m²



PENTHOUSE 301

3RD FLOOR + Roof garden

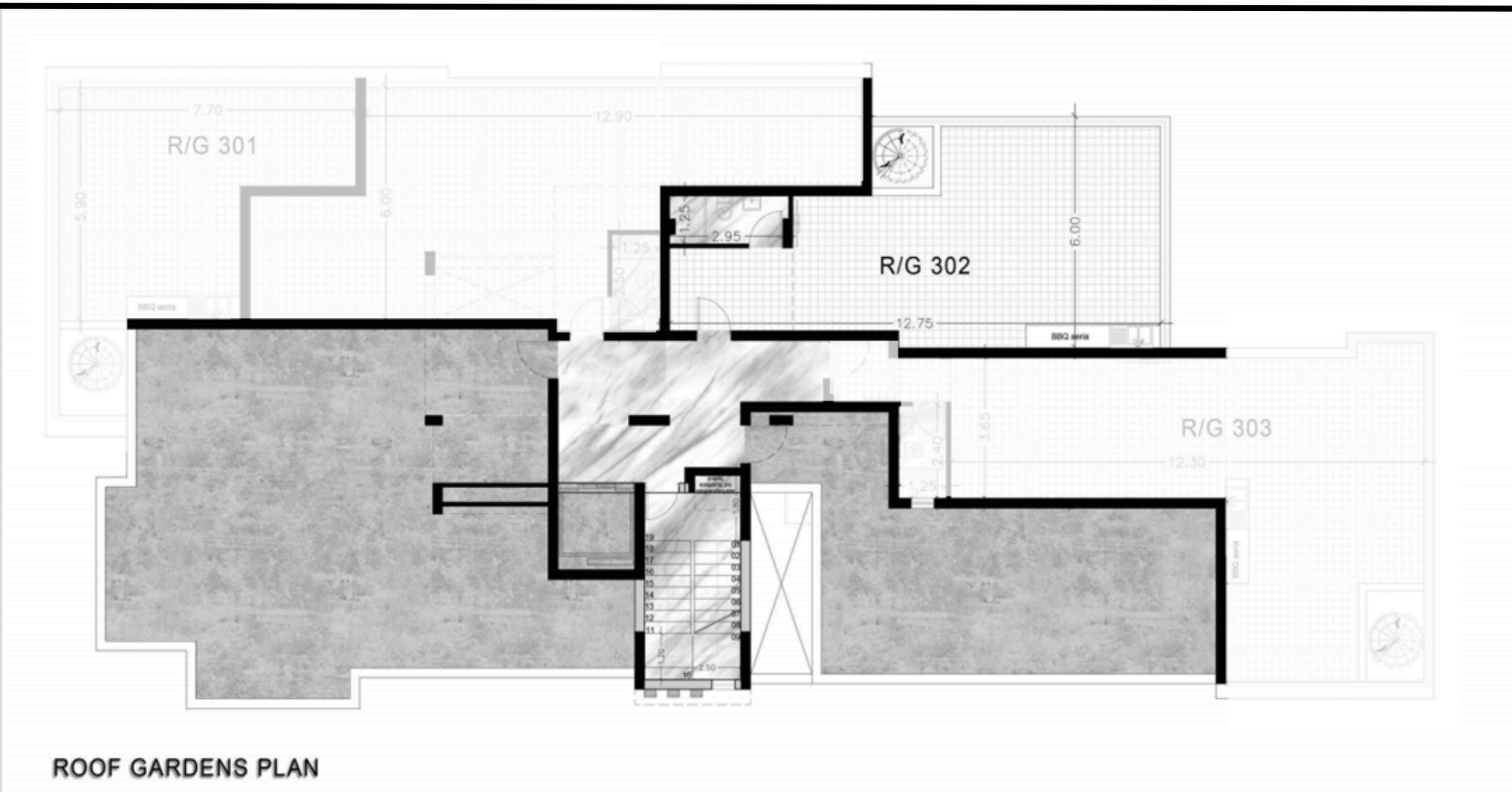
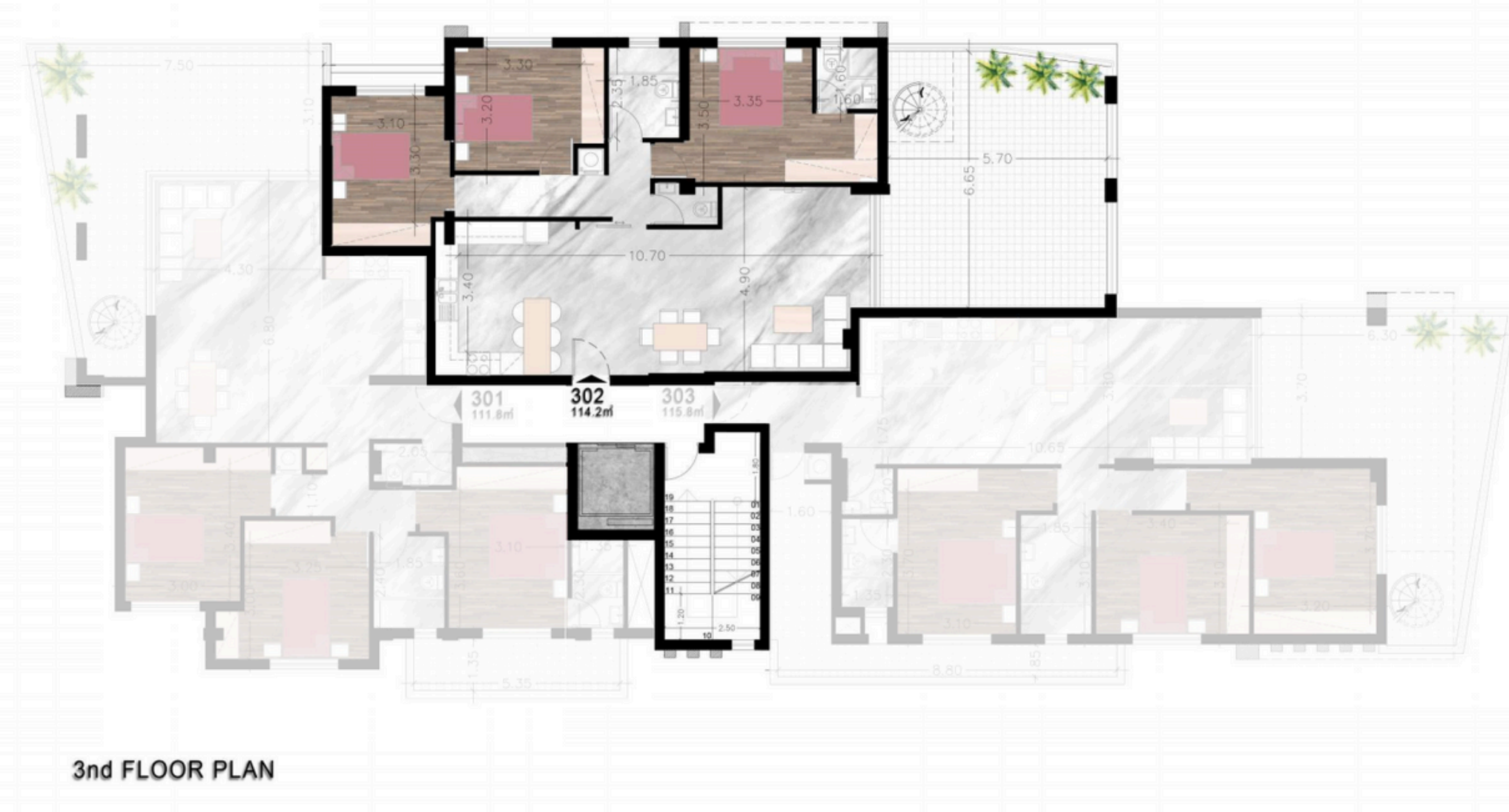
**TOTAL
AREA
196m**

**INTERNAL
AREA
112m**

**COVERED
VERANDA
34m**

**UNCOVERED
VERANDA
12m**

**ROOF
GARDEN
38m**



PENTHOUSE 302

3RD FLOOR + Roof garden

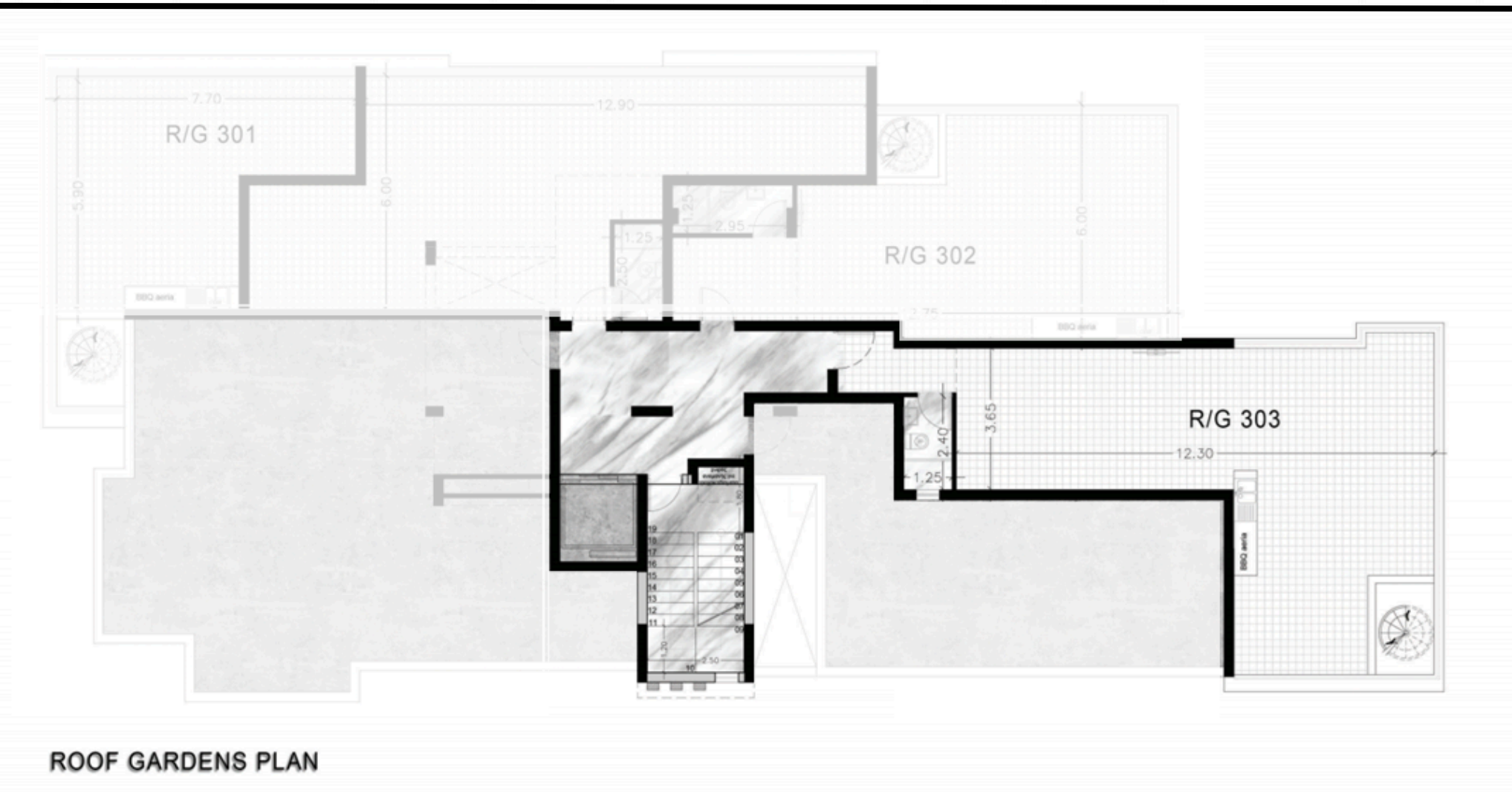
**TOTAL
AREA
253m**

**INTERNAL
AREA
114m**

**COVERED
VERANDA
41m**

**EXTRA
STUDIO
30m**

**ROOF
GARDEN
68m**



PENTHOUSE 303

3RD FLOOR + Roof garden

**TOTAL
AREA
253m**

**INTERNAL
AREA
116m**

**COVERED
VERANDA
31m**

**UNCOVERED
VERANDA
26m**

**ROOF
GARDEN
90m**

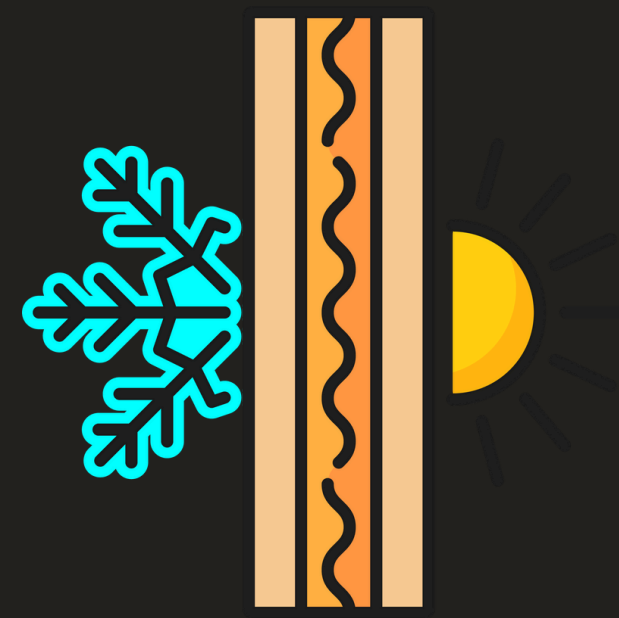
**EXTRA
STUDIO
30m**



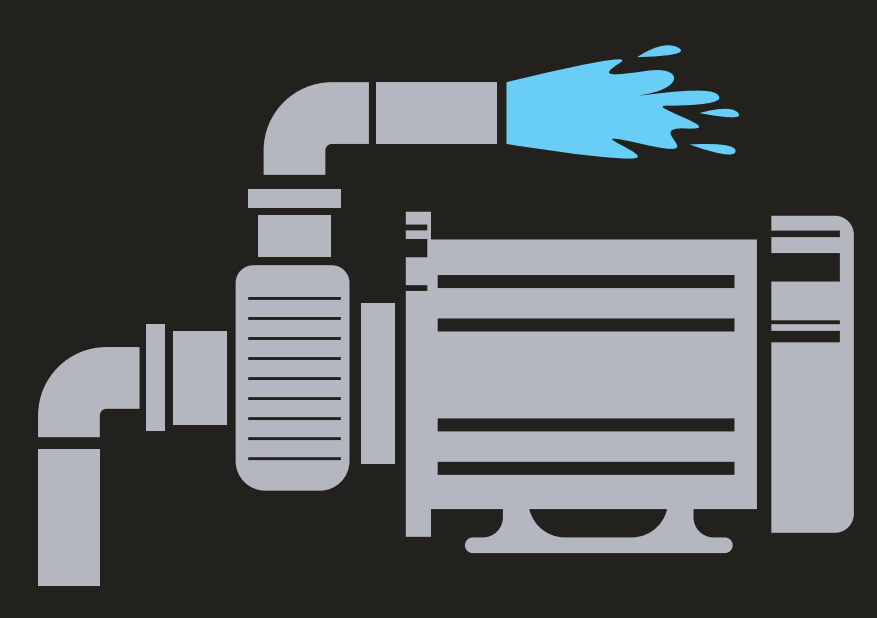
Smart Home System



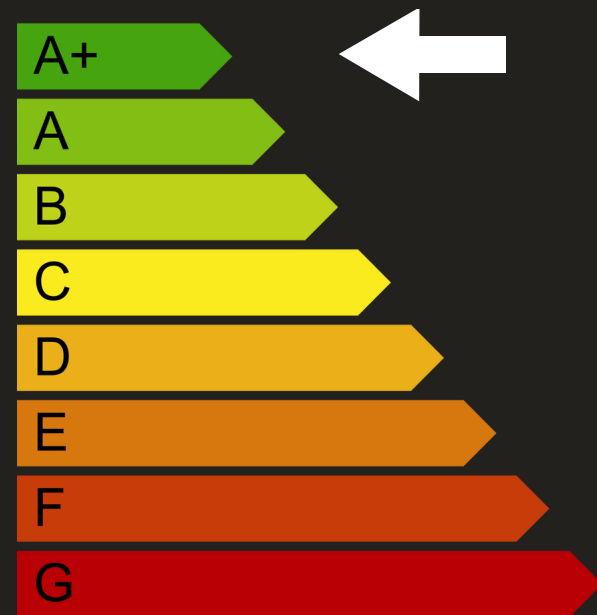
Double Insulated windows



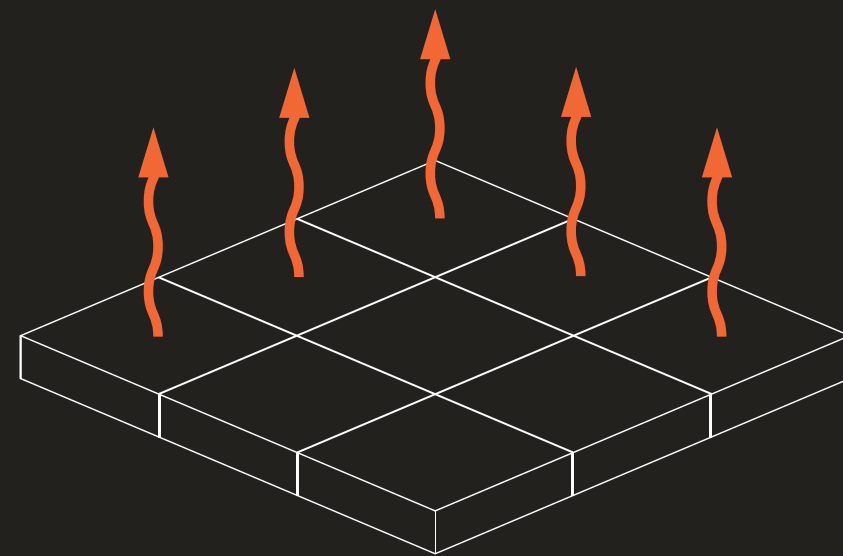
External thermal insulation



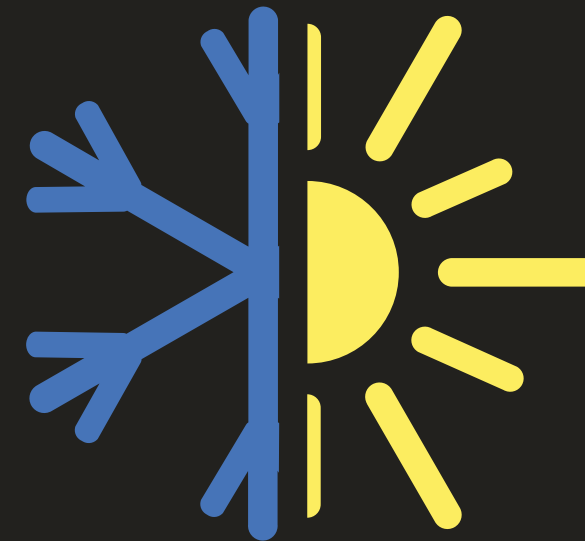
Water pressure system



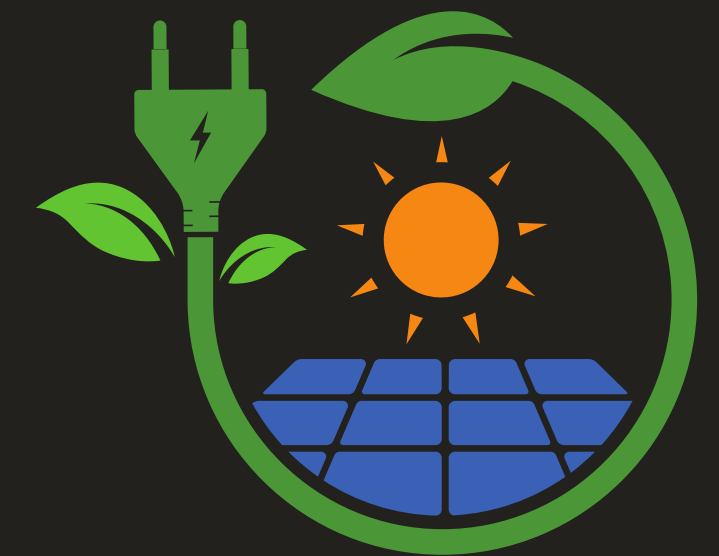
A+ Energy Efficiency



Underfloor Water heating
Provision



Hidden Air Condition System



Solar Energy System



HYPERMARKETS
1.3 KM



SCHOOL
500 M



HOSPITAL
9.5 KM



PHARMACY
600 M



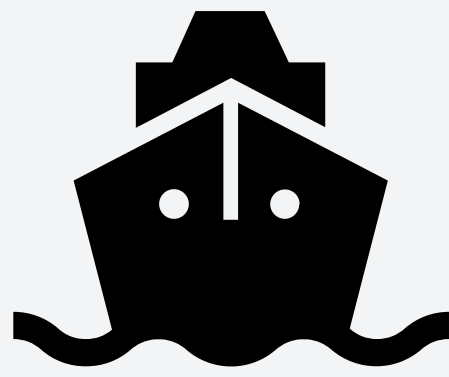
MOTORWAY
800 M



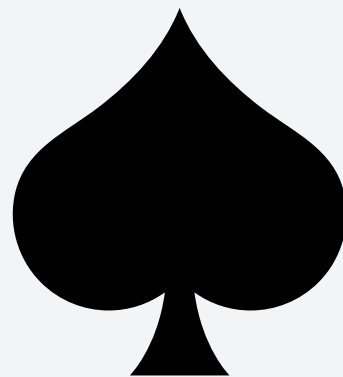
MALL
10 KM



AIRPORT
63 KM



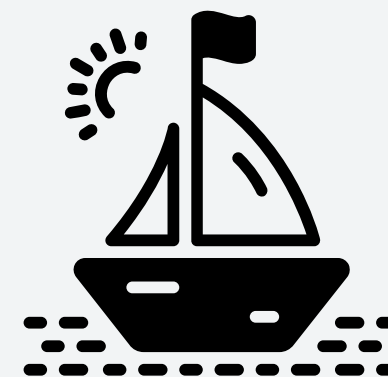
PORT
8 KM



CASINO
11 KM



BEACH
3.5 KM

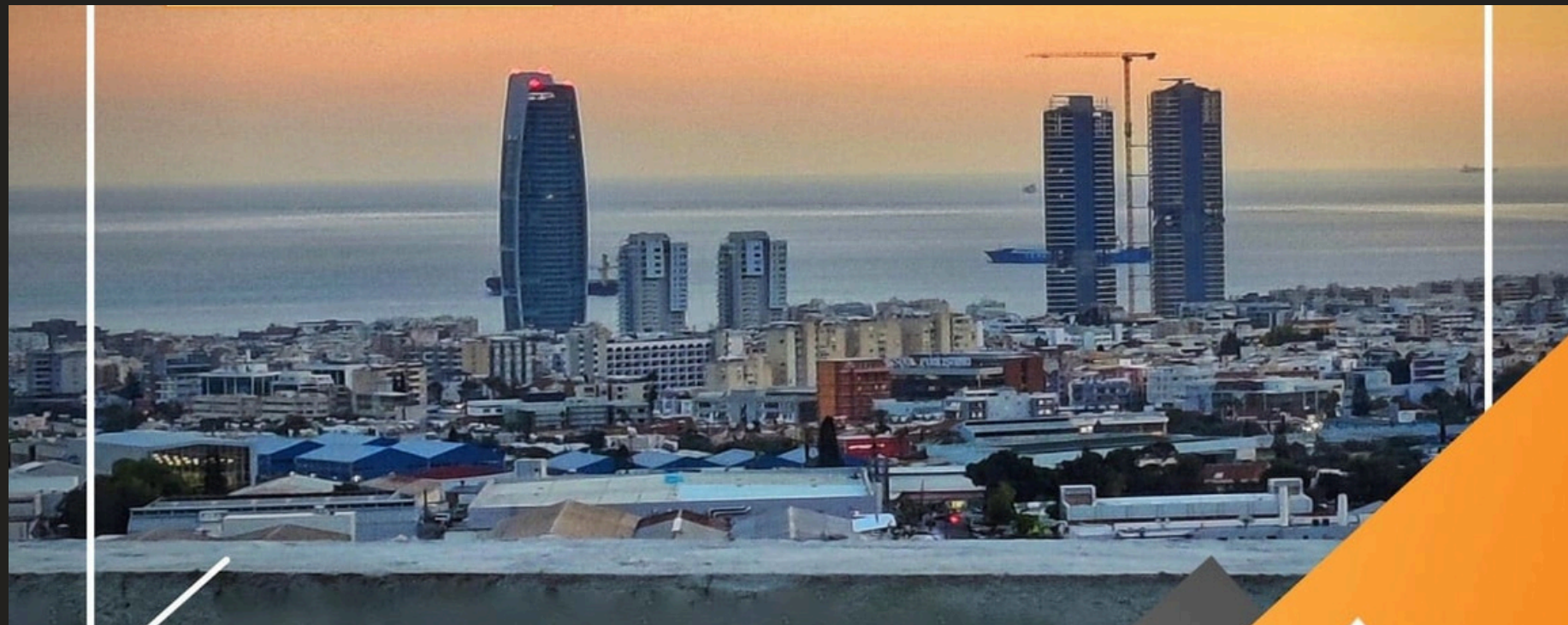


MARINA
6 KM



MOUNTAIN
35 KM

AVAILABLE NOW
DELIVERY DATE: 30/12/2025



APARTMENTS SPECIFICATIONS

- High tech Smart Home system
- Private parking
- High security safety apartment's entrance door with fire assistance
- Glass railing made with European Specifications on the veranda
- Quality marble 3cm on the veranda's perimeter wall
- Glass railing on the veranda
- Thermal insulating aluminum high quality serie
- Double glazes - sound insulating
- Electric shutters on the bedroom's windows
- Open plan architect design
- Luxurious ceramic tiles A CLASS 60cm x 120cm
- Quality parquet on the bedroom's floor
- First class Brands sanitary ware
- Cover natural or synthetic granite on the kitchen bench
- Plumbing installation pipe in pipe system
- Underfloor water heating provision
- Elegant plasterboard ceiling design with led lights
- Common Gym only for The Square's Members

BUILDING COMMON AREA SPECIFICATIONS

A ENERGY EFFICIENCY

- The building is designed with European regulation of the antiseismic code.
- Luxurious architecture décor on the building design
- Interior with LED lights design
- High ceiling entrance with elegant design
- Automate lights on the ground floor and parking area
- Minimalist designed lighted garden
- Main entrance door bell with camera system
- Private Storages
- Thermal insulation bricks (25cm) on the outside walls
- Thermally insulating polysterine 8cm all the shape of building
- High standard elevator electric technology
- A" quality tiles on the common stairs
- Electric security gates to parking entrance
(2 controls included for each apartment)
- Provisions for electric car chargers



Contact us

Address

Limassol, Agios Athanasios, Andrea Mantole 13

Email Address

info@xenofontos.com

Phone Number

+357 96559242