



Connie Residence

ANDREAS XENOFONTOS
DEVELOPERS

AGIOS ATHANASIOS AREA



Connie Residence

It consists of 10 spacious apartments of 1 Bedrooms, 2 Bedrooms, 3 Bedrooms & 3 + 1 Bedrooms, each made of very high quality materials of the highest standards but also the best brands in sanitary ware, ceramics, aluminum, doors and cabinets.



The exterior as well as the interior of the building are decorated with several modern décor and architecture that make it very special and distinct from other buildings in the area.



- [illegible]

Apartments Features :

- ✓ Photovoltaics
- ✓ Private storeroom
- ✓ Penthouse with roofgarden
- ✓ Covered parking
- ✓ Thermal polystyrene insulation exterior (7cm)
- ✓ Solar panel water heating
- ✓ Ceramics flooring (60x120)
- ✓ Provision for heating
- ✓ Provision for A/C
- ✓ Double Glazed windows
- ✓ First quality sanitary
- ✓ Thermal insulation aluminum
- ✓ Synthetic granite in the kitchen
- ✓ High ceilings
- ✓ Pipe in pipe plumbing system
- ✓ Electric opening bars to parking



This architectural site plan illustrates the layout of a building complex, including parking areas, storage rooms, and common spaces. The plan is oriented with a north arrow pointing towards the top right.

Parking Areas:

- Top Parking Lot:** Contains three cars (white, blue, and silver) and a wheelchair-accessible space marked with a wheelchair symbol.
- Internal Parking Spaces:**
 - P103:** Located near the top left, containing a white car.
 - P302:** Located in the middle left, containing a white car.
 - P301:** Located below P302, containing a white car.
 - P203, P202, P201:** Located in the top right, each containing a white car.
 - P402:** Located in the middle right, containing a white car.

Storage and Common Areas:

- STOR. 102:** Located near the top right, adjacent to a staircase.
- STOR. 402:** Located in the middle right, adjacent to a staircase.
- STOR. 401:** Located below STOR. 402.
- STOR. 301, 302:** Located in the middle left, adjacent to a staircase.
- STOR. 201, 202, 203:** Located in the bottom right, adjacent to a staircase.
- COMMON STORAGE:** A large central area.
- COMMON SPACE:** Located in the bottom right, adjacent to a staircase.
- EAC:** Located in the bottom right, adjacent to a staircase.

Entrances and Exits:

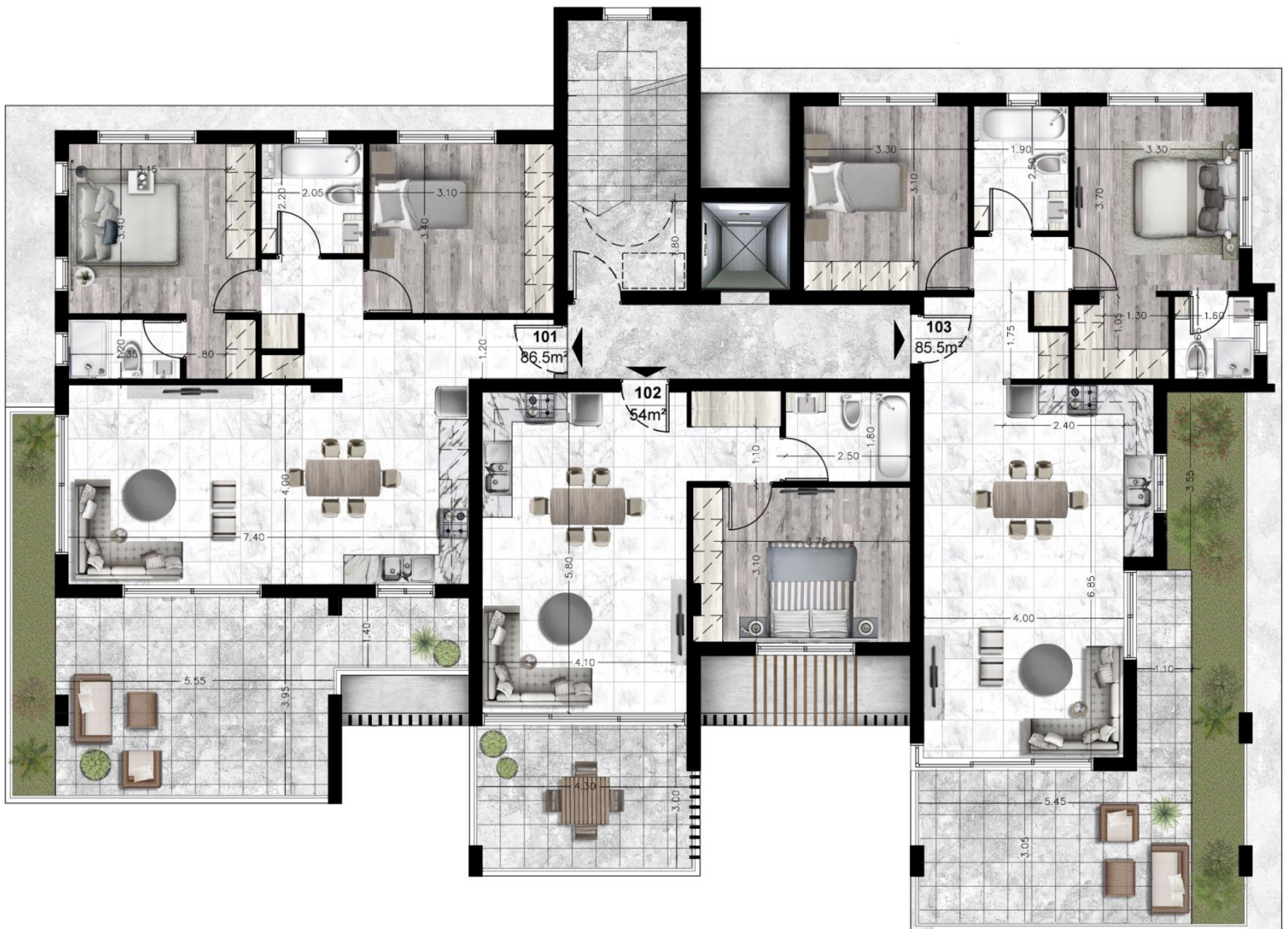
- ENTRANCE/EXIT:** Located at the bottom left, near a curved driveway.
- ENTRANCE:** Located in the middle right, near a staircase.
- ENTRANCE/EXIT:** Located at the bottom right, near a curved driveway.

Other Features:

- Staircases:** Indicated by sets of parallel lines, located near STOR. 102, STOR. 402, STOR. 301/302, and STOR. 201/202/203.
- Landscaping:** Green areas representing trees and shrubs are located along the bottom and right edges of the building complex.

1st floor plan

Apartments 101 – 102 - 103



2nd floor plan

Apartments 201 – 202 – 203



3rd floor plan

Apartments 301 – 302



4th floor plan

Penthouses 401 - 402



5th floor plan

Roof garden 401 – 402





	BED - ROOMS	INTERNAL AREA	COVERED VERANDA	UNCOVERED VERANDA	STORAGE (M ²)	GREEN AREA	TOTAL AREA	PRICE
101	2	86.5	23.5	-	2.5	7.9	121.5	SOLD
102	1	54	13.8	-	3.4	-	71.2	SOLD
103	2	85.5	21.2	-	2.9	13.6	123.2	SOLD
201	2	86.5	23.5	-	3.65	7.9	121.5	SOLD
202	1	54	13.8	-	1.6	-	71.2	SOLD
203	2	85.5	21.2	-	2.25	13.6	123.2	SOLD
301	3	116	30.4	5	3.4	18	172.8	SOLD
302	3	111	29.3	2	1.6	13	154.9	SOLD
401	3+1	116	30.3	69	3.3	14.5	247.1	SOLD
402	3+1	111	30	77.5	3.6	12.5	248.6	SOLD

Payment Method:

- 5% Payment in advance.
- 35% By signing a contract.
- 30% Completion of the structure (formwork).
- 25% Installation of ceramics.
- 5% Delivery.



- Prices + VAT
- Prices may change during project construction

Thanks for your interest!
Contact with sales manager.

<p>Marios Xenofontos (Sales manager) Mob. 96 559242 Email: marios@xenofontos.com Website : www.xenofontos.com</p>
